



PRODUCT DESCRIPTION

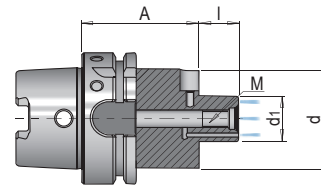
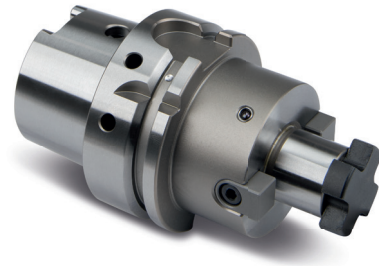
- » With enlarged contact surface
- » Optimal running smoothness due to hard turned shanks
- » Hard reworked puller grooves, HSK shoulder and HSK ejection surface
- » With four cooling channels
- » With Balluff chip hole

APPLICATION

- » For clamping cutter heads and shell type milling cutters

INCLUDED IN THE DELIVERY

- » Includes milling cutter lock screw and fixed carrier block



l	M	d	Interface	d1	A	No.	EUR
17	M8	38	HSK-A 63	16	50	HWZ 1137/HSK-A 63/16/ 50	<>
19	M10	48	HSK-A 63	16	100	HWZ 1137/HSK-A 63/16/100	<>
17	M8	38	HSK-A 63	22	50	HWZ 1137/HSK-A 63/22/ 50	<>
19	M10	48	HSK-A 63	22	100	HWZ 1137/HSK-A 63/22/100	<>