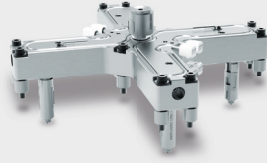
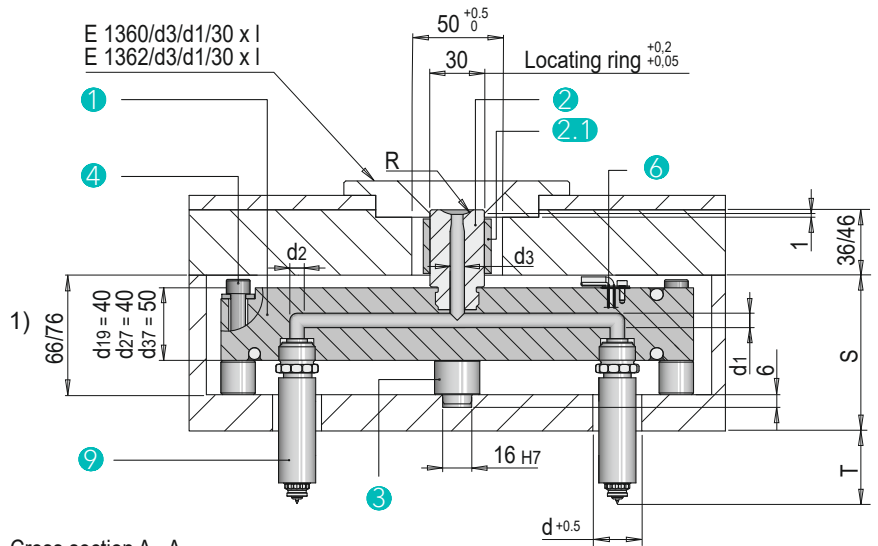


## EH 6000 CMT4

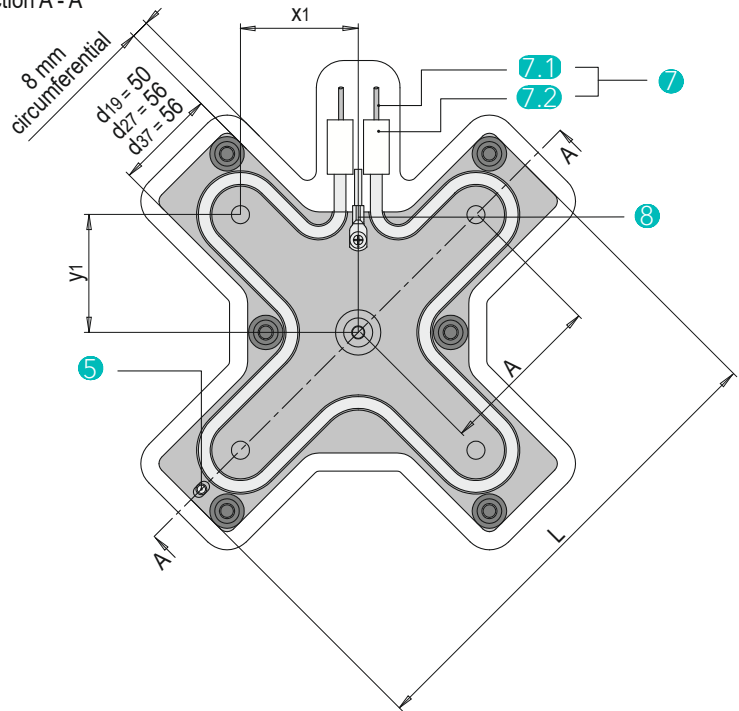


### Standardised Hot Runner Manifold screw-in type

- 1 Cross manifold incl. heating
- 2 EH 6400 sprue bush incl. heating
- 2.1 Sprue bush heater EH 5020
- 3 EH 6200 centering piece
- 4 EH 6214 titanium spacer and screw set
- 5 Anti-rotation pin E 1300
- 6 EH 52001 90° bent thermocouple
- 7 EH 5220 pipe heater connection set
- 7.1 Connecting cable
- 7.2 Connector clamp
- 8 Grounding cable EH 5230
- 9 EH 4100 hot runner nozzle



Cross section A - A

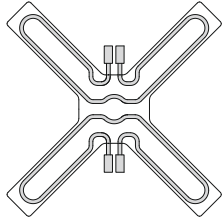
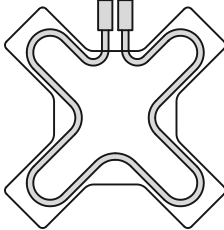
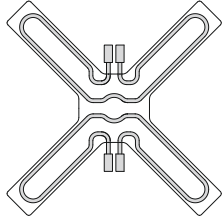
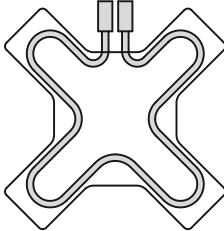
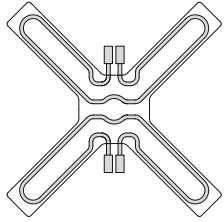


Note: the hole patterns A are based on the mould dimensions. The linear expansion is calculated by Meusburger.

1) Plate thickness depends on hot runner manifold height

Item	L	x1 y1 (min.-max.)	d1	d2	d3	R	S min.	S max.	T min.	T max.	CP <sup>2)</sup>	Power total watts	Manifold heater item no.	d	Type
EH 6000 CMT4/19/..	164	25.0 - 31.25	5	5	6	0/15.5/40	86	116	15	160	1	230 V / 1400 W	2x EH 5030/ /6,5 x 425/700	19	
	199	31.26 - 43.75										230 V / 1900 W	2x EH 5030/ /6,5 x 550/950/		
	235	43.76 - 56.25										230 V / 2200 W	2x EH 5030/ /6,5 x 700/1100/		
	270	56.26 - 68.75										230 V / 2500 W	2x EH 5030/ /6,5 x 850/1250/		
	306	68.76 - 81.25										230 V / 2800 W	2x EH 5030/ /6,5 x 1000/1400/		

2) CP: Control points of hot runner manifold

Item	L	x1 y1 (min.-max.)	d1	d2	d3	R	S min.	S max.	T min.	T max.	CP <sup>2)</sup>	Power total watts	Manifold heater item no.	d	Type
EH 6000 CMT4/19/..	341	81.26 - 93.75	5	5	6	0/ 15.5/ 40	86	116	15	160	2	230 V / 4200 W	4x EH 5030/ /6,5 x 650/1050/	19	
	376	93.76 - 106.25										230 V / 4400 W	4x EH 5030/ /6,5 x 700/1100/		
	412	106.26 - 118.75										230 V / 4700 W	4x EH 5030/ /6,5 x 775/1175/		
	447	118.76 - 131.25										230 V / 5000 W	4x EH 5030/ /6,5 x 850/1250/		
	482	131.26 - 143.75										230 V / 5300 W	4x EH 5030/ /6,5 x 925/1325/		
	518	143.76 - 156.25										230 V / 5600 W	4x EH 5030/ /6,5 x 1000/1400/		
EH 6000 CMT4/27/..	161	25.0 - 31.25	8	8	8	0/ 15.5/ 40	86	116	15	160	1	230 V / 1400 W	2x EH 5030/ /6,5 x 425/700/	27	
	196	31.26 - 43.75										230 V / 1900 W	2x EH 5030/ /6,5 x 550/950/		
	231,5	43.76 - 56.25										230 V / 2200 W	2x EH 5030/ /6,5 x 700/1100/		
	267	56.26 - 68.75										230 V / 2450 W	2x EH 5030/ /6,5 x 825/1225/		
	302	68.76 - 81.25										230 V / 2750 W	2x EH 5030/ /6,5 x 975/1375/		
EH 6000 CMT4/27/..	337,5	81.26 - 93.75	8	8	8	0/ 15.5/ 40	86	116	15	160	2	230 V / 4200 W	4x EH 5030/ /6,5 x 650/1050/	27	
	373	93.76 - 106.25										230 V / 4500 W	4x EH 5030/ /6,5 x 725/1125/		
	408	106.26 - 118.75										230 V / 4800 W	4x EH 5030/ /6,5 x 800/1200/		
	443,5	118.76 - 131.25										230 V / 5100 W	4x EH 5030/ /6,5 x 875/1275/		
	479	131.26 - 143.75										230 V / 5400 W	4x EH 5030/ /6,5 x 950/1350/		
	514	143.76 - 156.25										230 V / 5600 W	4x EH 5030/ /6,5 x 1000/1400/		
EH 6000 CMT4/37/..	192	25.0 - 31.25	12	12	14	0/ 15.5/ 40	86	116	15	160	1	230 V / 1800 W	2x EH 5030/ /6,5 x 525/900/	37	
	227	31.26 - 43.75										230 V / 2150 W	2x EH 5030/ /6,5 x 675/1075/		
	262	43.76 - 56.25										230 V / 2400 W	2x EH 5030/ /6,5 x 800/1200/		
	298	56.26 - 68.75										230 V / 2700 W	2x EH 5030/ /6,5 x 950/1350/		
	333	68.76 - 81.25										230 V / 2950 W	2x EH 5030/ /6,5 x 1075/1475/		
EH 6000 CMT4/37/..	368	81.26 - 93.75	12	12	14	0/ 15.5/ 40	86	116	15	160	2	230 V / 4400 W	4x EH 5030/ MH-Flex/6,5 x 700/1100/230	37	
	404	93.76 - 106.25										230 V / 4700 W	4x EH 5030/ MH-Flex/6,5 x 775/1175/230		
	439	106.26 - 118.75										230 V / 4900 W	4x EH 5030/ MH-Flex/6,5 x 825/1225/230		
	477	118.76 - 131.25										230 V / 5300 W	4x EH 5030/ MH-Flex/6,5 x 925/1325/230		
	512	131.26 - 143.75										230 V / 5600 W	4x EH 5030/ MH-Flex/6,5 x 1000/1400/230		
	545	143.76 - 156.25										230 V / 5900 W	4x EH 5030/ MH-Flex/6,5 x 1075/1475/230		

2) CP: Control points of hot runner manifold



**Configurator for hot runner moulds:**  
[ecom.meusburger/fh\\_menu](http://ecom.meusburger/fh_menu)