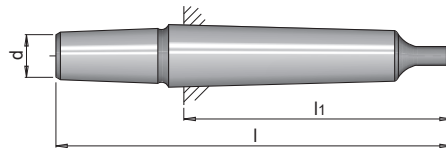
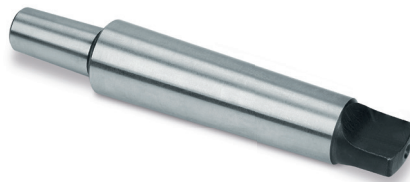


DESCRIZIONE DEL PRODOTTO

- » Adatto per mandrino con attacco cono Morse
- » Interamente temprato e rettificato



d	l	l1	MK ¹⁾	Inserimento	N°	EUR
14,5	97	62	MK 1	B 16	HWZ 9300/MK1/B16	< >
14,5	110,5	75	MK 2	B 16	HWZ 9300/MK2/B16	< >
14,5	134	94	MK 3	B 16	HWZ 9300/MK3/B16	< >

1) MK: Codolo cilindrico